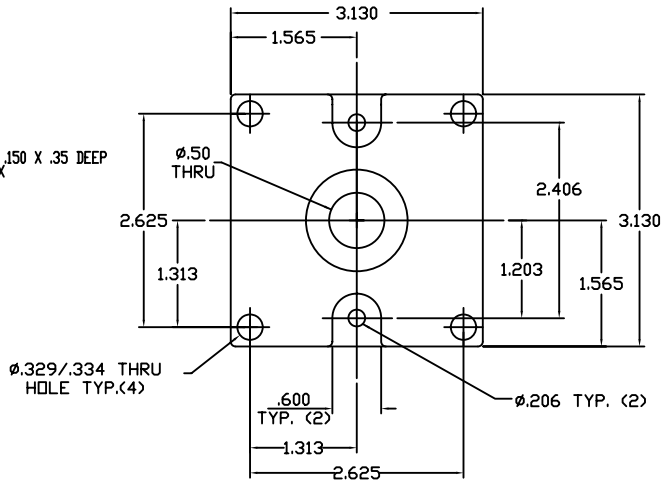
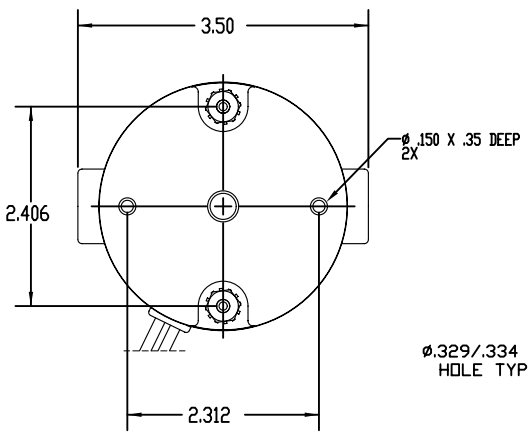
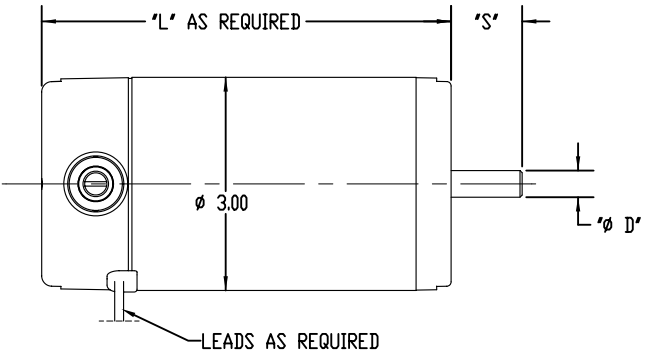
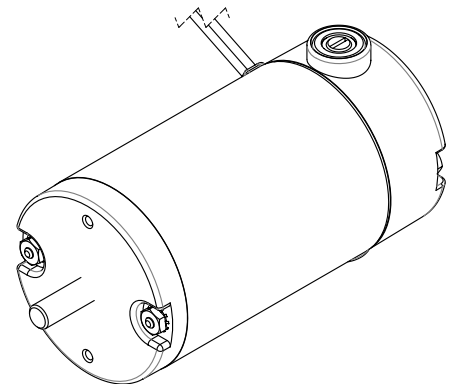



SPECIFICATIONS	
INPUT VOLTS	12 VDC - 240 VDC
OUTPUT SPEED	1000 TO 8000 RPM
OUTPUT H.P.	UP TO .4 H.P. CONTINUOUS
SHAFT DIA $\phi$ D'	$\phi$ .375 STD, OR AS REQUIRED UP TO $\phi$ .500
SHAFT EXT. 'S'	AS REQUIRED
SHAFT FEATURE	FLAT, KEYWAY, OR AS REQUIRED
MOUNTING	FACE MOUNT , FOOT MOUNT, OR AS REQUIRED
BRUSHES	INTERNAL BRUSH CARD, OR REPLACEABLE BRUSHES
LEAD WIRES	AS REQUIRED
BEARINGS	BALL BEARING
INSULATION	UL CLASS H



OPTIONAL END HOUSING

DESIGN APPROVAL	DATE	UNSPECIFIED TOLERANCES	This drawing is the property of the Dumore Corporation. It must not be reproduced or copied without written permission.	 PART NO. <b>DM30</b> <b>DUMORE CORPORATION</b> 1030 VETERANS ST. FAUSTON, VA 53948
DES. ENG.	3/10/2011	$\pm$ .005		
MFG. ENG.		$\pm$ .015		
D/C		$\pm$ .020		
SALES		$\pm$ .030		
DO NOT SCALE DRAWING		REMOVE ALL BURRS BREAK SHARP CORNERS	TITLE	
MATERIAL SPEC.			3.0" PMDC MOTOR	SCALE