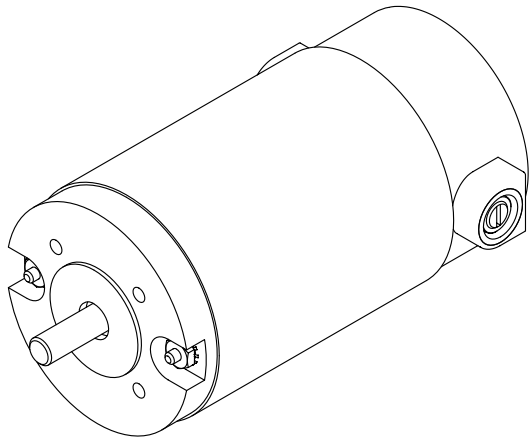
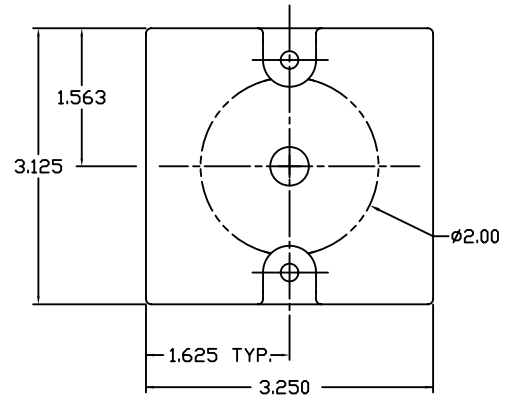
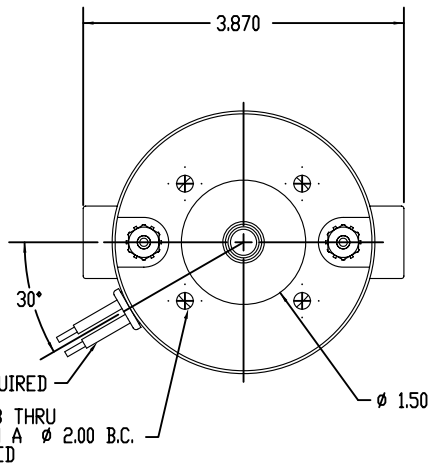
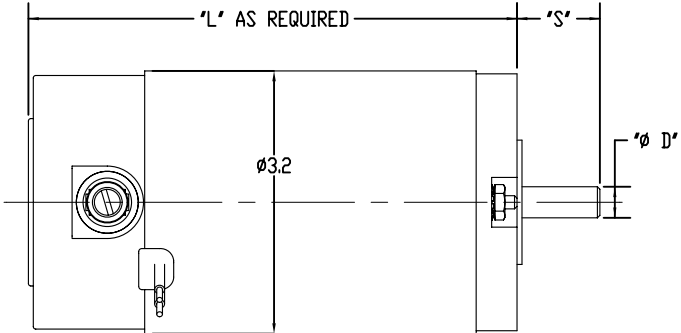


8 7 6 5 4 3 2 1



SPECIFICATIONS	
INPUT VOLTS	12 VDC - 240 VDC
OUTPUT SPEED	1000 TO 8000 RPM
OUTPUT H.P.	UP TO .5 H.P. CONTINUOUS
SHAFT DIA ϕ D'	ϕ .375 STD, OR AS REQUIRED UP TO ϕ .500
SHAFT EXT. 'S'	AS REQUIRED
SHAFT FEATURE	FLAT, KEYWAY, OR AS REQUIRED
MOUNTING	FACE MOUNT, FOOT MOUNT, OR AS REQUIRED
BRUSHES	INTERNAL BRUSH CARD, OR REPLACEABLE BRUSHES
LEAD WIRES	AS REQUIRED
BEARINGS	BALL BEARING
INSULATION	UL CLASS H




OPTIONAL END HOUSING

D
C
B
A

D
C
B
A

8 7 6

DESIGN APPROVAL	DATE	UNSPECIFIED TOLERANCES	This drawing is the property of the Dumore Corporation. It must not be reproduced or copied without written permission.	 PART NO. DM32 DUMORE CORPORATION 1030 VETERANS ST. WAUWATON, WI 53948
DES. ENG.	3/15/2011	± .015		
MFG. ENG.		± .010		
D.C.		± .008		
SALES		± .005		
DO NOT SCALE DRAWING		REMOVE ALL BURRS BREAK SHARP CORNERS	TITLE	3.2" MOTOR
MATERIAL SPEC.	REV. NO.	REV. DATE	REV. BY	SCALE