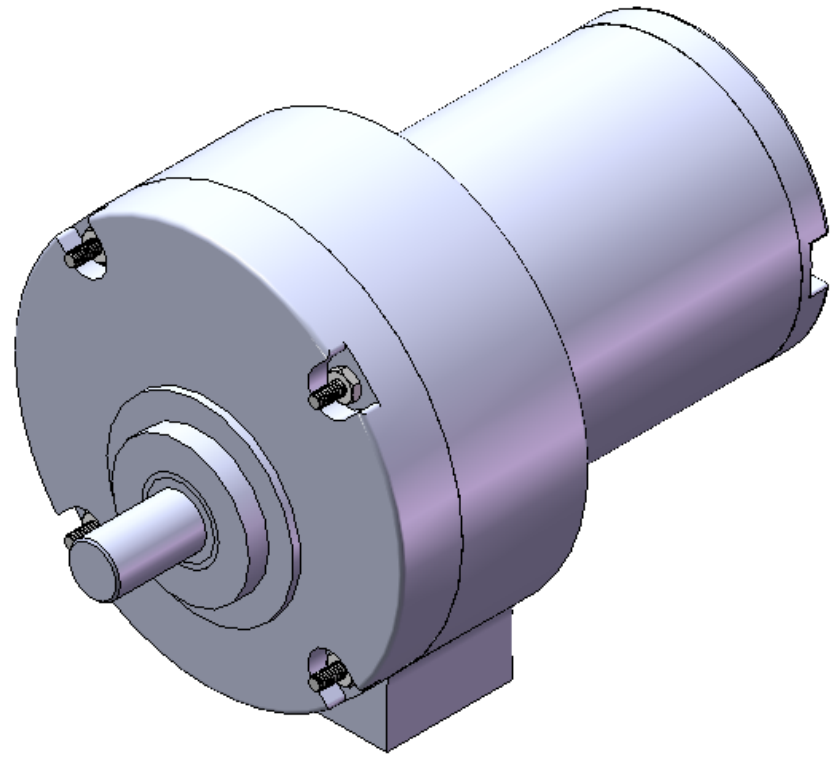
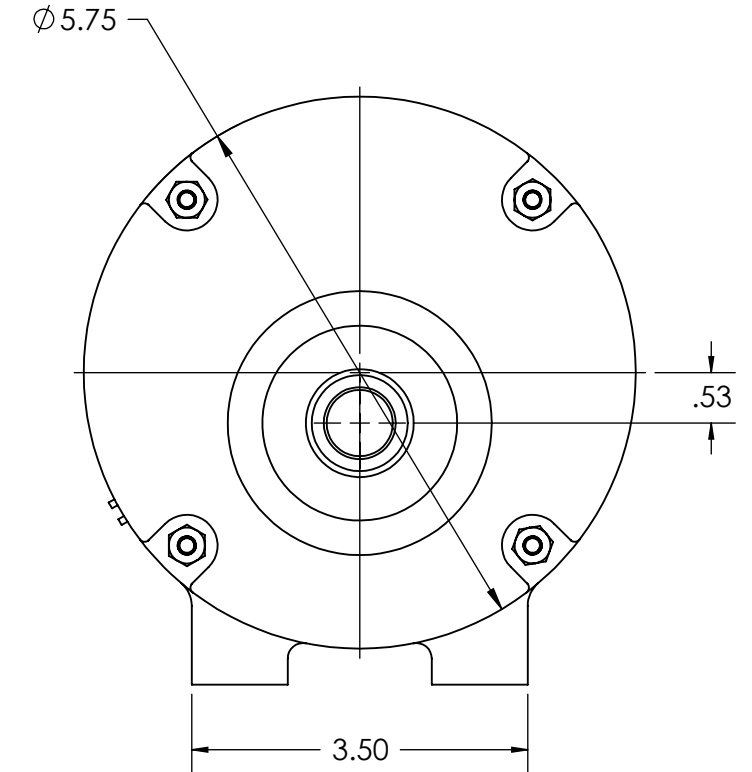
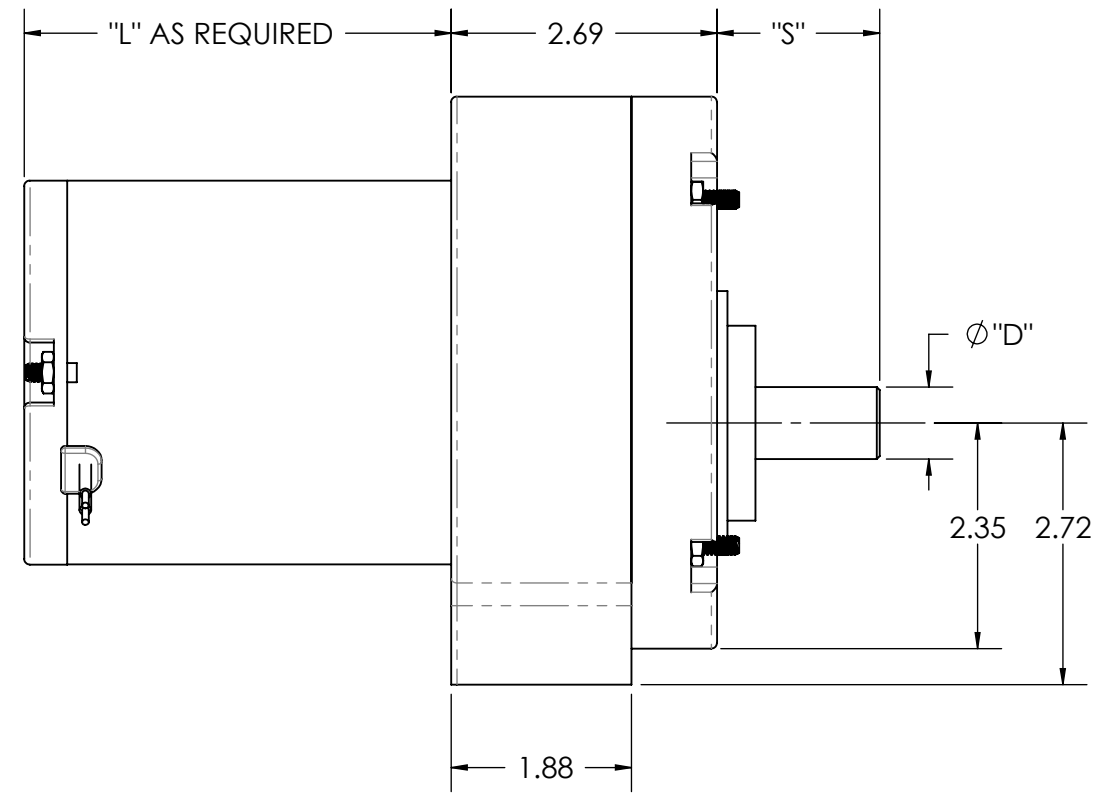


8 7 6 5 4 3 2 1



SPECIFICATIONS	
INPUT VOLTS	12 VDC - 240 VDC
OUTPUT SPEED	40-500 RPM
OUTPUT TORQUE	UP TO 500 IN-LBS, CONTINUOUS
GEAR RATIO	12:1 TO 50:1
SHAFT DIA "ØD"	Ø .750 STD.
SHAFT EXT. "S"	AS REQUIRED
SHAFT FEATURE	FLAT, KEYWAY, OR AS REQUIRED
MOUNTING	FACE, FOOT, OR AS REQUIRED
BRUSHES	INTERNAL BRUSH CARD, OR REPLACEABLE BRUSHES
LEAD WIRES	AS REQUIRED
BEARINGS	BALL BEARING THROUGHOUT
INSULATION	UL CLASS H
MOTOR TYPE	SERIES DM40



REV.	DESCRIPTION	DATE	ECN
DESIGN APPROVAL	DATE	UNSPECIFIED TOLERANCES	This Drawing is the property of the Dumore Corporation. It must not be reproduced or copied without written per-mission.
DES. ENG.	3/8/2011	xxx ± .005	
MFG. ENG.		xx ± .015	
Q.C.		x MACHINE FINISH	
SALES		ANGLES ± 1°	
DO NOT SCALE DRAWING		REMOVE ALL BURRS BREAK SHARP CORNERS	TITLE
MATERIAL SPEC.		Req. per Piece	RECEIVED AS
		Pattern No.	3-D AVAILABLE
			DWG. BY
			DATE 3/8/2011
			SCALE 1:4


**PART NO.**  
**DP500**  
**DUMORE CORPORATION**  
 1030 VETERANS ST. MAUSTON, WI 53948

8 7 6