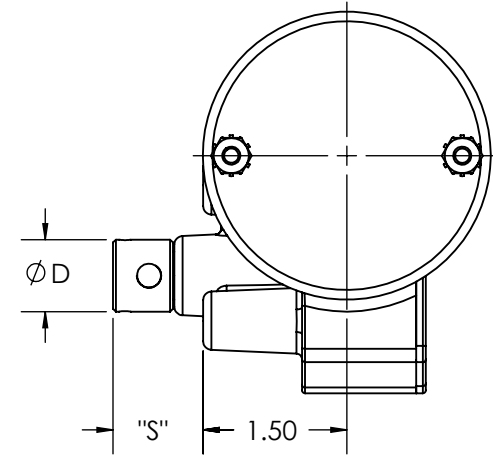
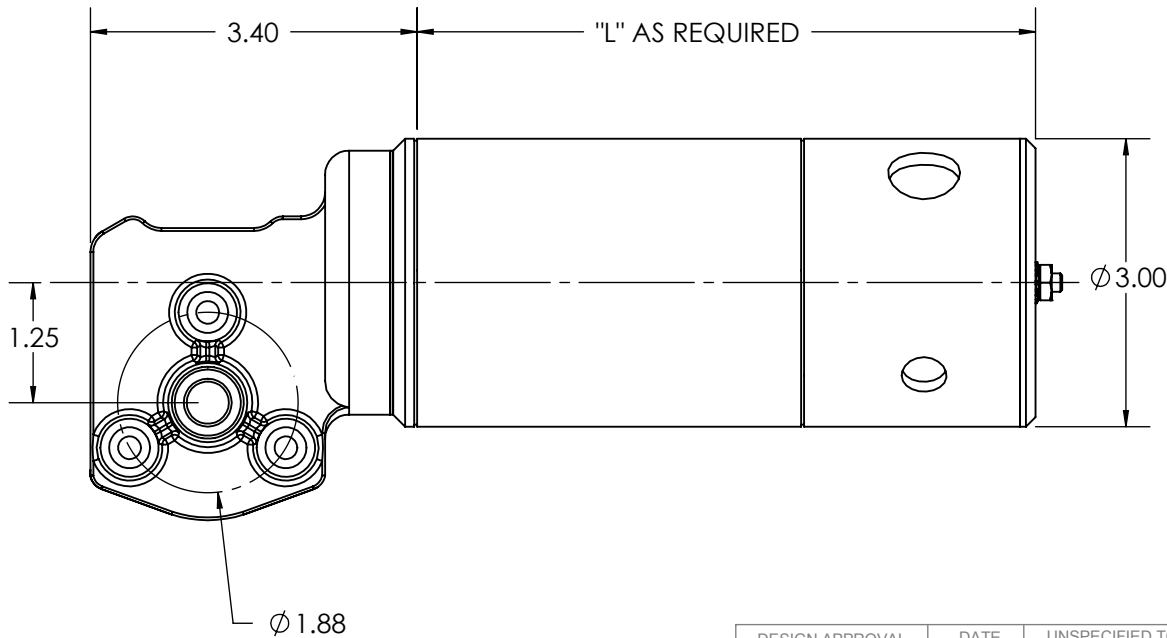



SPECIFICATIONS	
INPUT VOLTS	12 VDC - 240 VDC
OUTPUT SPEED	40-250 RPM
OUTPUT TORQUE	UP TO 175 IN-LBS, CONTINUOUS
GEAR RATIO	24:1
SHAFT DIA "ØD"	Ø .438 UP TO Ø .500
SHAFT EXT. "S"	AS REQUIRED
SHAFT FEATURE	FLAT, KEYWAY, OR AS REQUIRED
MOUNTING	FACE MOUNT AS SHOWN
BRUSHES	INTERNAL, EXTERNAL REPLACEABLE
LEAD WIRES	AS REQUIRED
BEARINGS	BALL BEARINGS
INSULATION	UL CLASS H
MOTOR TYPE	SERIES DM28 OR DM30



DESIGN APPROVAL		DATE	UNSPECIFIED TOLERANCES		This Drawing is the property of the Dumore Corporation. It must not be reproduced or copied without written permission.		PART NO.
DES. ENG.		9/16/2010	.XXX ± .005				DR175
MFG. ENG.			.XX ± .015				
Q.C.			.X ± .050				
SALES			MACHINE FINISH	125 ✓		<b>DUMORE CORPORATION</b> 1030 VETERANS ST. MAUSTON, WI 53948	
			ANGLES	± 1°			
			CONCENTRICITY	.005 TIR			
			SQUARENESS	.001 PER IN.			
DO NOT SCALE DRAWING			REMOVE ALL BURRS BREAK SHARP CORNERS		TITLE		
					3.0" RIGHT ANGLE GEARMOTOR		
MATERIAL SPEC.			Req. per Piece	RECEIVED AS	DWG. BY	DATE	SCALE
			Pattern No.	3-D AVAILABLE	CRD. BY	9/16/2010	1:4
						9/16/2010	