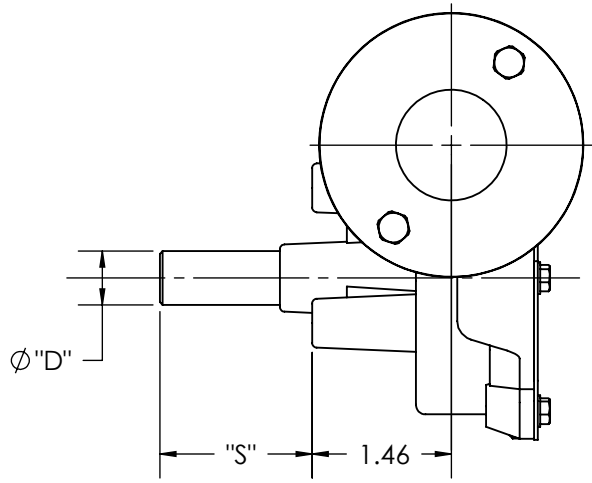
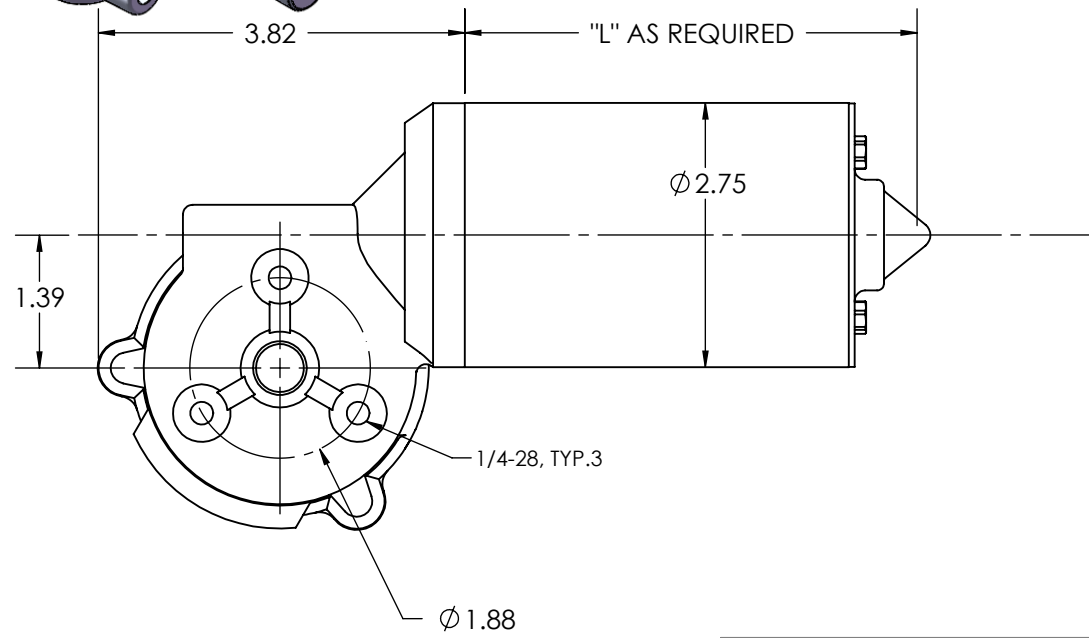


SPECIFICATIONS	
INPUT VOLTS	12 VDC - 24 VDC
OUTPUT SPEED	55-172 RPM
OUTPUT TORQUE	UP TO 25 IN-LBS, CONTINUOUS
GEAR RATIO	35:1
SHAFT DIA "ØD"	Ø .438 STD. UP TO Ø .500
SHAFT EXT. "S"	AS REQUIRED
SHAFT FEATURE	FLAT, KEYWAY, OR AS REQUIRED
MOUNTING	FACE MOUNT AS SHOWN
BRUSHES	INTERNAL BRUSH CARD
LEAD WIRES	AS SHOWN
BEARINGS	SLEEVE AND BALL BEARING
INSULATION	UL CLASS B
MOTOR TYPE	SERIES DM28



DESIGN APPROVAL	DATE	UNSPECIFIED TOLERANCES	REV.	DESCRIPTION	DATE	ECN
DES. ENG.	2/15/2011	.XXX ± .005 .XX ± .015 .X ± .050		This Drawing is the property of the Dumore Corporation. It must not be reproduced or copied without written permission.		
MFG. ENG.		MACHINE FINISH 125 ✓ ANGLES ± 1° CONCENTRICITY .005 TIR SQUARENESS .001 PER IN.			PART NO.	
Q.C.					DR25	
SALES					DUMORE CORPORATION	
DO NOT SCALE DRAWING		REMOVE ALL BURRS BREAK SHARP CORNERS	TITLE		1030 VETERANS ST. MAUSTON, WI 53948	
MATERIAL SPEC.			2.8" RIGHT ANGLE GEARMOTOR			
		Req. per Piece	RECEIVED AS	DWG. BY	DATE	SCALE
		Pattern No.	3-D AVAILABLE	CRD. BY	DATE	1:4
					2/15/2011	
					2/15/2011	