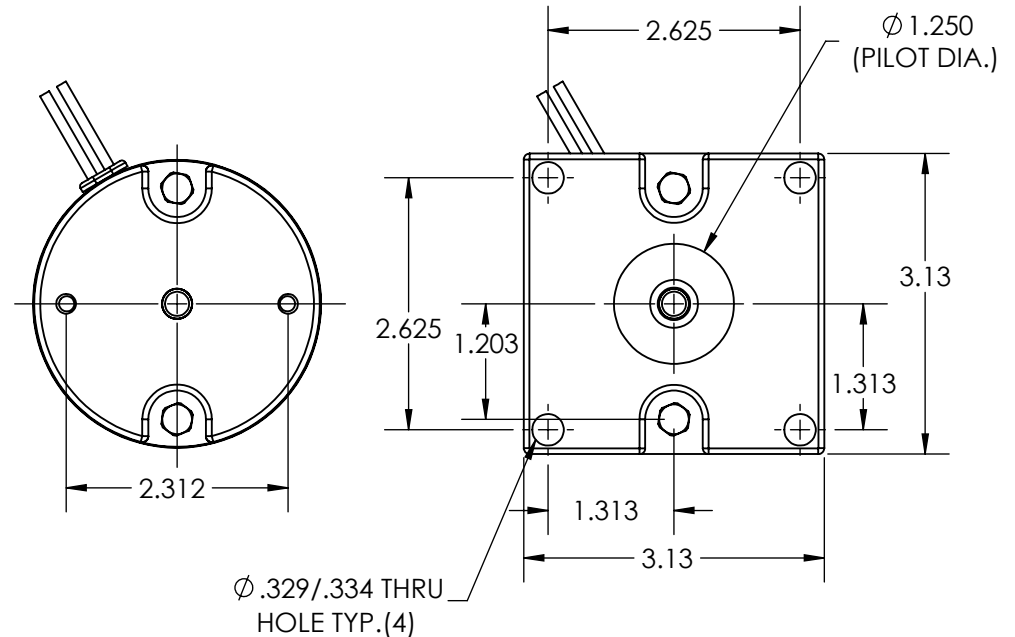
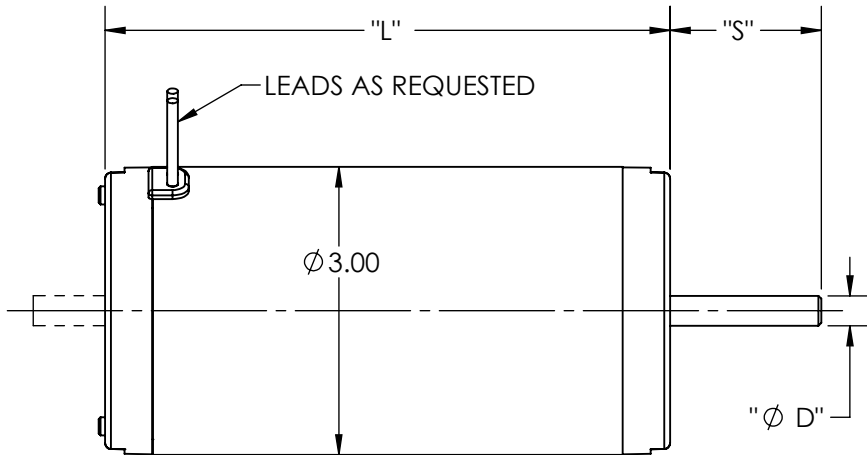
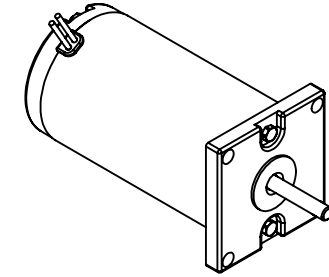
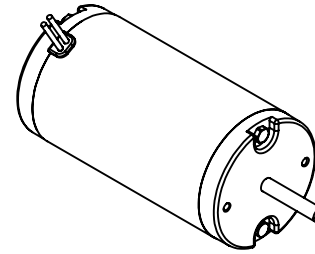


SPECIFICATIONS	
INPUT VOLTAGE	12 VDC - 240 VDC
OUTPUT SPEED	1000 TO 8000 RPM
OUTPUT H.P.	UP TO .4 H.P. CONTINUOUS
LENGTH "L"	3.82 / 6.60
SHAFT DIA. "D"	UP TO ϕ .500
SHAFT EXT. "S"	AS REQUESTED
SHAFT FEATURES	HOB, FLAT, KEYWAY, OR AS REQUESTED
MOUNTING	FACE MOUNT, AND / OR FOOT MOUNT
BRUSHES	INTERNAL BRUSH CARD
POWER CONNECTION	AS REQUESTED
OUTPUT BEARING	BALL BEARING
VENTING	ENCLOSED / VENTED / FAN COOLED
INSULATION	UL CLASS H



REV.	DESCRIPTION	DATE	ECN
------	-------------	------	-----

DESIGN APPROVAL	DATE
DES. ENG.	
MFG. ENG.	
Q.C.	
SALES	

UNSPECIFIED TOLERANCES	
.XXX	\pm .005
.XX	\pm .015
.X	\pm .050
MACHINE FINISH	\pm 1°
ANGLES	.005 TIR
CONCENTRICITY	.001 PER IN.
SQUARENESS	

This Drawing is the property of the Dumore Corporation. It must not be reproduced or copied without written permission.



PART NO.

DM30

DUMORE CORPORATION

1030 VETERANS ST. MAUSTON, WI 53948

DO NOT SCALE DRAWING

REMOVE ALL BURRS
BREAK SHARP CORNERS

TITLE

3.0" PMDC MOTOR

MATERIAL SPEC.	Req. per Piece	Pattern No.

RECEIVED AS

DWG. BY

DATE

SCALE

CRD. BY

DATE

1:2