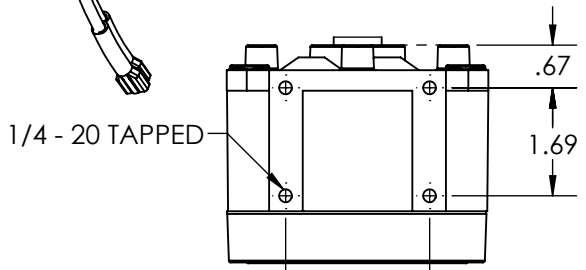
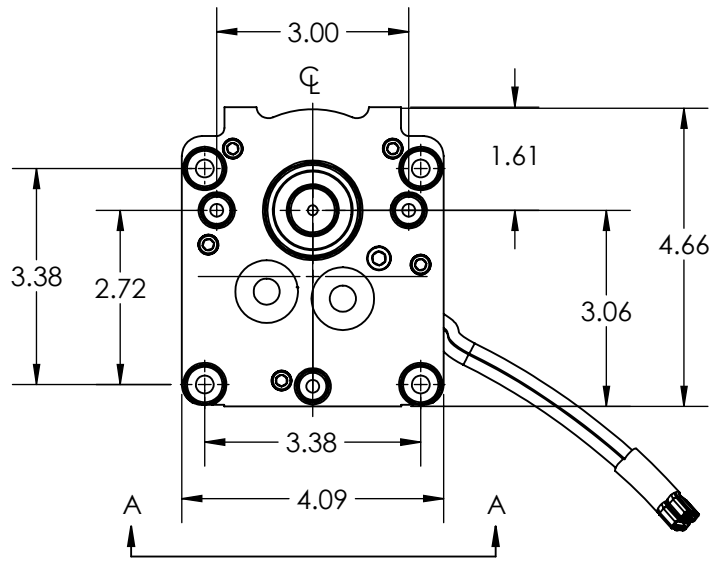
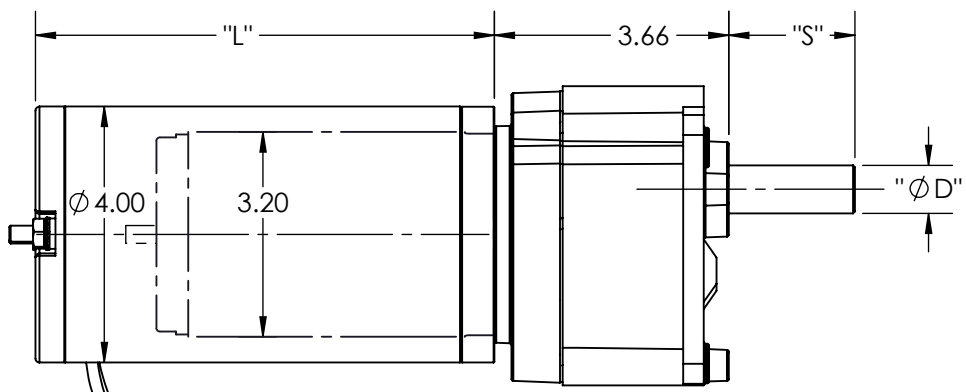
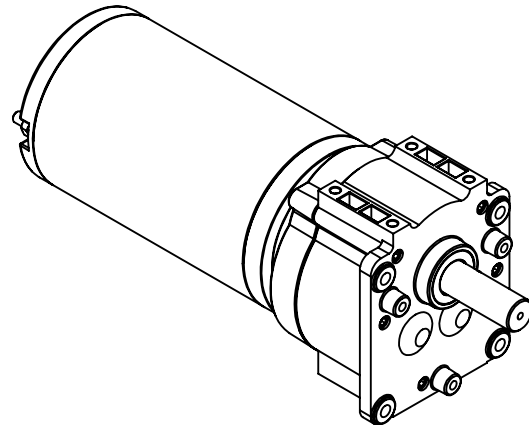


SPECIFICATIONS	
INPUT VOLTAGE	12 VDC - 240 VDC
OUTPUT SPEED	7 - 1200 RPM
OUTPUT TORQUE	UP TO 700 IN-LBS
GEAR RATIO	5:1 - 250:1
LENGTH "L"	4.00 / 8.75
SHAFT DIA. "Ø D"	UP TO Ø .750
SHAFT EXT. "S"	AS REQUESTED
SHAFT FEATURE	HOB, FLAT, KEYWAY, OR AS REQUESTED
MOUNTING	FACE, FOOT, OR AS REQUESTED
BRUSHES	INTERNAL BRUSH CARD, OR REPLACEABLE BRUSHES
LEAD WIRES	AS REQUIRED
BEARINGS	NEEDLE, ROLLER BARINGS OR SLEEVES
VENTING	ENCLOSED / VENTED / FAN COOLED
INSULATION	UL CLASS H
MOTOR TYPE	SERIES DM32 OR DM40



MOUNTING TYP.
TOP AND BOTTOM
VIEW A-A

REV.	DESCRIPTION	DATE	ECN
DESIGN APPROVAL	DATE	UNSPECIFIED TOLERANCES	
DES. ENG.		.XXX	± .005
MFG. ENG.		.XX	± .015
		.X	± .050
Q.C.		MACHINE FINISH	± 1°
SALES		ANGLES	.005 TIR
		CONCENTRICITY	.001 PER IN.
		SQUARENESS	
DO NOT SCALE DRAWING		REMOVE ALL BURRS BREAK SHARP CORNERS	
MATERIAL SPEC.		Req. per Piece	RECEIVED AS
		Pattern No.	DWG. BY
			CRD. BY
			DATE
			SCALE
			1:3

This Drawing is the property of the Dumore Corporation. It must not be reproduced or copied without written permission.



PART NO.
DP350
DUMORE CORPORATION
1030 VETERANS ST. MAUSTON, WI 53948

TITLE
PARALLEL SHAFT GEARMOTOR