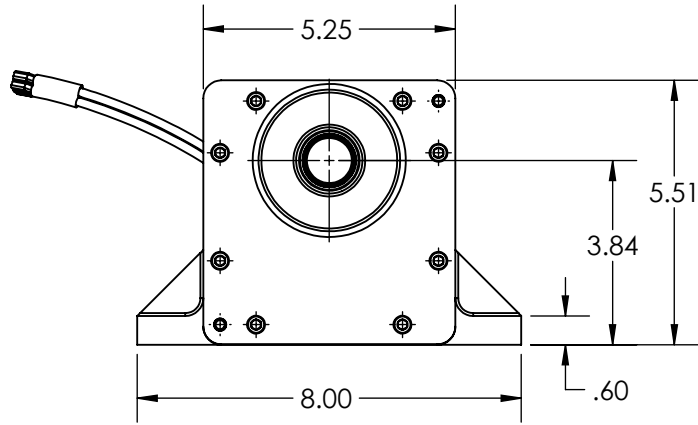
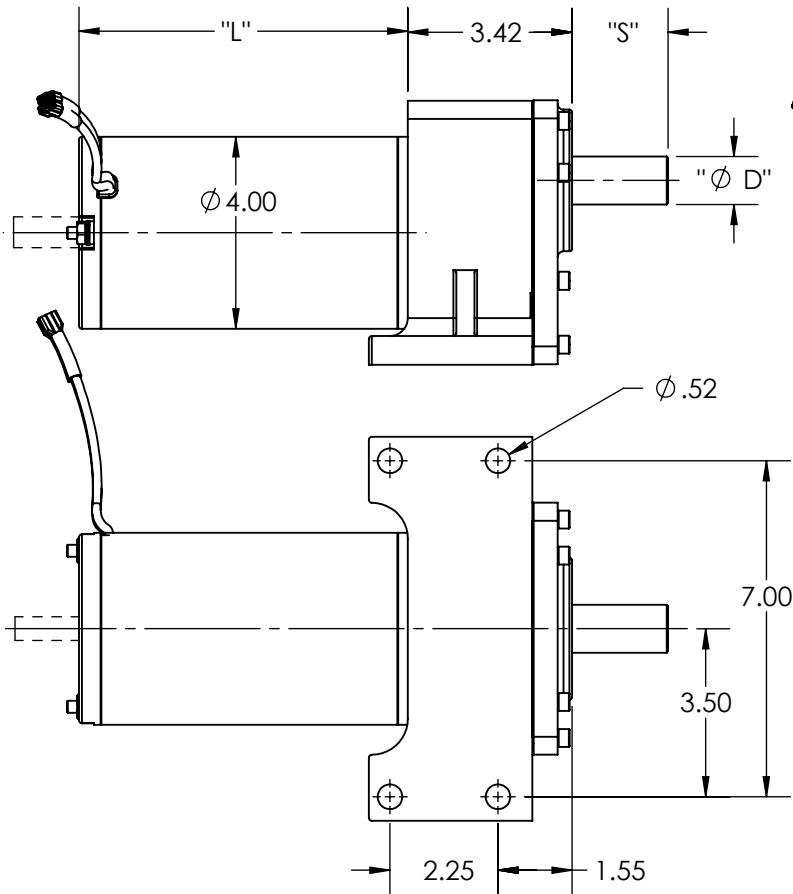
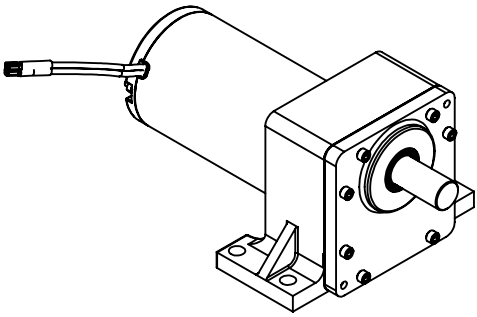


SPECIFICATIONS	
INPUT VOLTAGE	12 - 240 VDC
OUTPUT SPEED	30 - 225 RPM
OUTPUT TORQUE	UP TO 2500 IN-LB
GEAR RATIO	36:1 TO 75:1
LENGTH "L"	5.60 / 8.75
SHAFT DIA. "Ø D"	UP TO Ø 1.00
SHAFT EXT. "S"	AS REQUESTED
SHAFT FEATURE	HOB, FLAT, KEYWAY, OR AS REQUESTED
MOUNTING	FOOT MOUNTING
BRUSHES	INTERNAL BRUSH CARD OR REPLACEABLE
LEAD WIRES	AS REQUESTED
BEARINGS	BALL BEARING
VENTING	ENCLOSED / VENTED / FAN COOLED
INSULATION	UL CLASS H
MOTOR TYPE	DM 40



REV.	DESCRIPTION	DATE	ECN
DESIGN APPROVAL	DATE	UNSPECIFIED TOLERANCES	
DES. ENG.		.XXX	± .005
MFG. ENG.		.XX	± .015
Q.C.		.X	± .050
SALES		MACHINE FINISH	± 1°
		ANGLES	.005 TIR
		CONCENTRICITY	.001 PER IN.
		SQUARENESS	
DO NOT SCALE DRAWING		REMOVE ALL BURRS BREAK SHARP CORNERS	
MATERIAL SPEC.		RECEIVED AS	TITLE
	Req. per Piece	DWG. BY	DATE
	Pattern No.	CKD. BY	DATE
			SCALE
			1:4

This Drawing is the property of the Dumore Corporation. It must not be reproduced or copied without written permission.



PART NO.
DP450
DUMORE CORPORATION
1030 VETERANS ST. MAUSTON, WI 53948

PARALLEL SHAFT GEARMOTOR