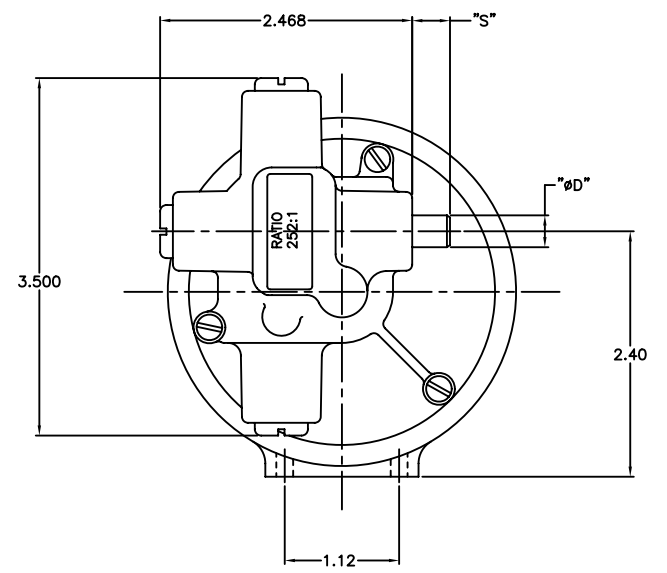
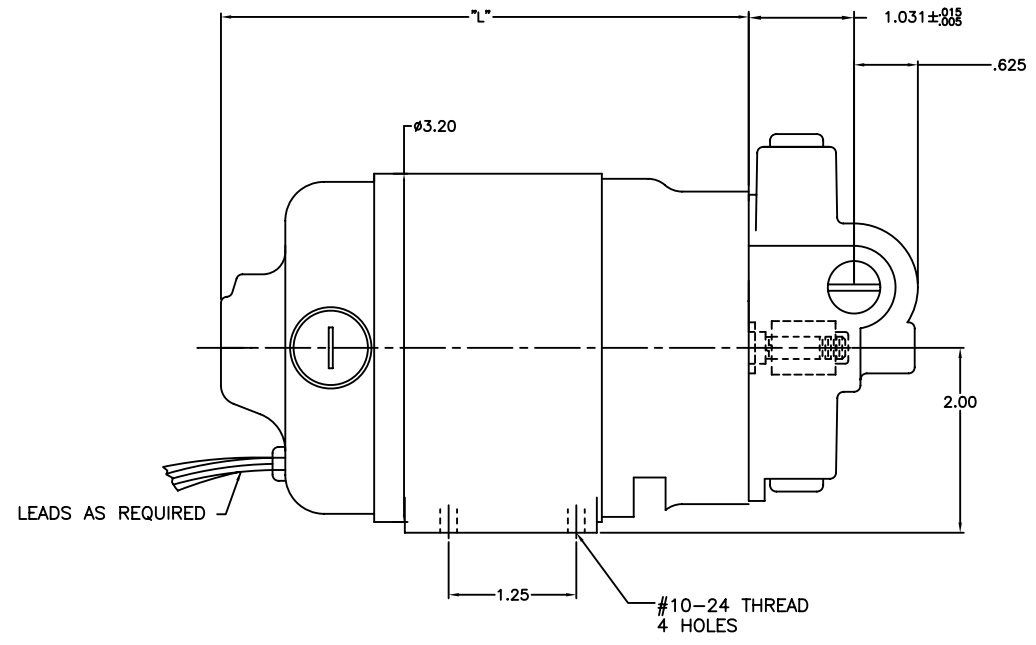


PART NO. DR18

SPECIFICATIONS	
INPUT VOLTS	12 VDC - 240 VDC
OUTPUT SPEED	2-83 RPM.
OUTPUT TORQUE	UP TO 18 IN-LBS, CONTINUOUS
GEAR RATIO	72:1 TO 1089:1
SHAFT DIA "ØD"	Ø.312 STD
SHAFT EXT. "S"	AS REQUIRED
SHAFT FEATURE	FLAT, KEYWAY, OR AS REQUIRED
MOUNTING	FOOT, OR AS REQUIRED
BRUSHES	INTERNAL BRUSH CARD, OR REPLACEABLE BRUSHES
LEAD WIRES	AS REQUIRED
BEARINGS	BRONZE BUSHING
INSULATION	UL CLASS H
MOTOR TYPE	SERIES DM32



DESIGN APPROVAL	DATE	UNSPECIFIED TOLERANCES xxx ±.005 xx ±.015 x ±.050 Machine Finish Angles ±1° Concentricity .005 TIR Squareness .001 per in.	This Drawing is the property of the Dumore Corporation. It must not be reproduced or copied without written permission.		PART NO.	DR18			
DES.ENG.					DUMORE CORPORATION	1030 VETERAN ST. MAULSTON, WI 53948			
MFG.ENG.					TITLE		3.2" RIGHT ANGLE GEARMOTOR		
Q.C.					DO NOT SCALE DRAWING	REMOVE ALL BURRS BREAK SHARP CORNERS	RECEIVED AS	DATE	SCALE
SALES					MATERIAL SPEC.		DATE		

USE: