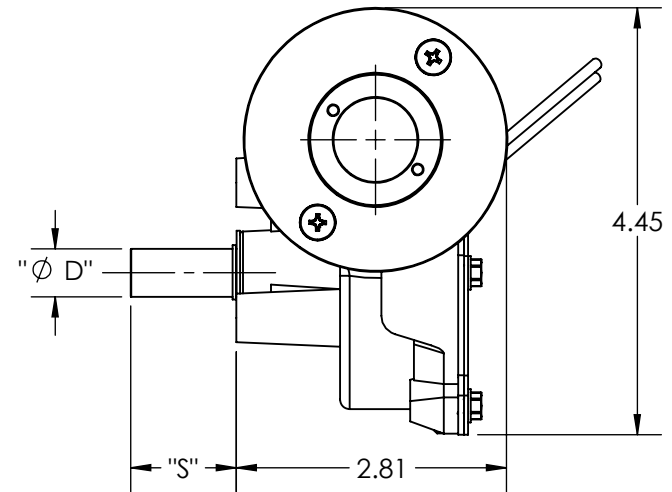
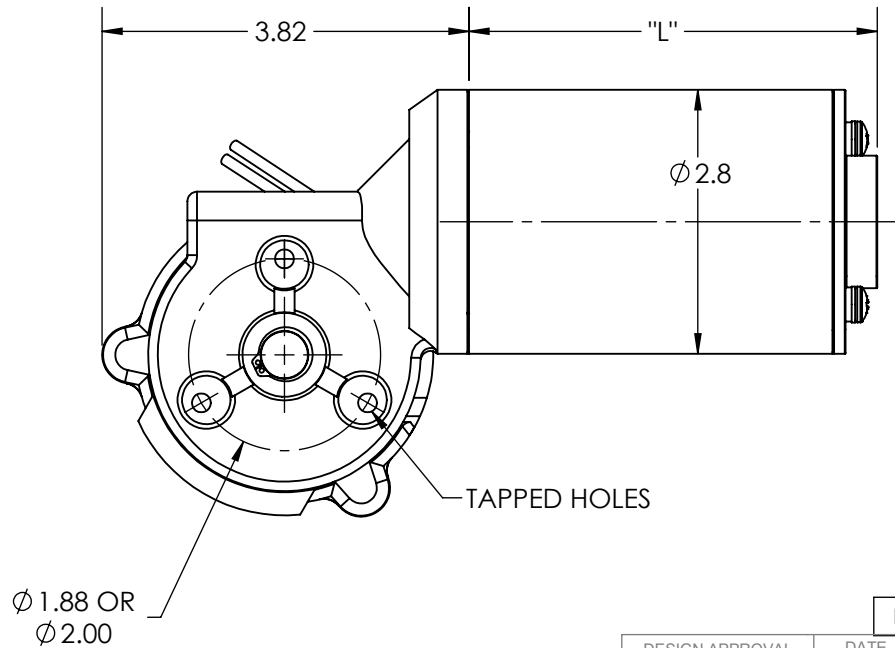
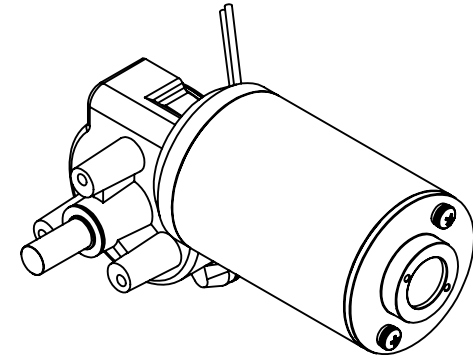


SPECIFICATIONS	
INPUT VOLTAGE	12 - 48 VDC
OUTPUT SPEED	50-150 RPM
OUTPUT TORQUE	UP TO 80 IN-LBS
GEAR RATIO	35:1
LENGTH "L"	3.75 / 6.25
SHAFT DIA. "Ø D"	UP TO Ø .500
SHAFT EXT. "S"	AS REQUESTED
SHAFT FEATURE	HOB, FLAT, KEYWAY, OR AS REQUESTED
MOUNTING	FACE MOUNTING AS SHOW
BRUSHES	INTERNAL BRUSH CARD, OR REPLACEABLE
LEAD WIRES	AS REQUESTED
BEARINGS	SLEEVE AND BALL BEARING
VENTING	ENCLOSED / VENTED / FAN COOLED
INSULATION	UL CLASS H
MOTOR TYPE	SERIES DM28



REV.	DESCRIPTION	DATE	ECN
DESIGN APPROVAL	DATE	UNSPECIFIED TOLERANCES	
DES. ENG.		.XXX	± .005
MFG. ENG.		.XX	± .015
		.X	± .050
Q.C.		MACHINE FINISH	± 1°
SALES		ANGLES	.005 TIR
		CONCENTRICITY	.001 PER IN.
		SQUARENESS	
DO NOT SCALE DRAWING		REMOVE ALL BURRS BREAK SHARP CORNERS	
MATERIAL SPEC.		TITLE	
		RIGHT ANGLE GEARMOTOR	
		RECEIVED AS	
		DWG. BY	
		DATE	
		CRD. BY	
		DATE	
		SCALE	
		1:2	

This Drawing is the property of the Dumore Corporation. It must not be reproduced or copied without written permission.



DUMORE CORPORATION
1030 VETERANS ST. MAUSTON, WI 53948

PART NO.

DR25