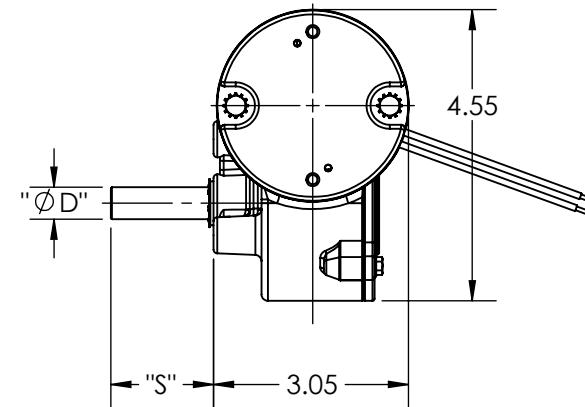
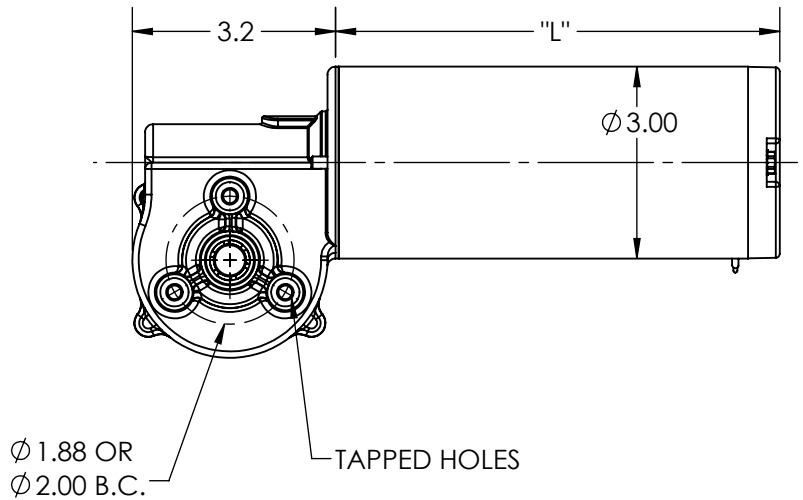
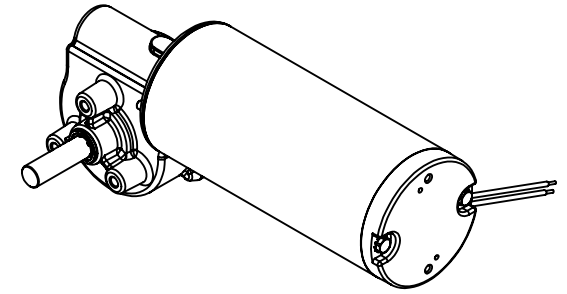


SPECIFICATIONS	
INPUT VOLTAGE	12VDC / 240 VDC
OUTPUT SPEED	25 RPM / 400 RPM
OUTPUT TORQUE	UP TO 400 IN-LB INT.
GEAR RATIO	12:1 OR 48:1
LENGTH "L"	3.82 / 6.60
SHAFT DIA. "Ø D"	UP TO Ø .500
SHAFT EXT. "S"	AS REQUIRED
SHAFT FEATURE	HOB, FLAT, KEYWAY, OR AS REQUIRED
MOUNTING	FACE MOUNT AS SHOWN
BRUSHES	INTERNAL, OR EXTERNAL REPLACEABLE
LEAD WIRES	AS REQUESTED
BEARINGS	BALL BEARING
VENTING	ENCLOSED / VENTED / FAN COOLED
INSULATION	UL CLASS H
MOTOR TYPE	SERIES DM30



REV.	DESCRIPTION	DATE	ECN
DESIGN APPROVAL	DATE	UNSPECIFIED TOLERANCES	
DES. ENG.		.XXX	± .005
MFG. ENG.		.XX	± .015
		.X	± .050
Q.C.		MACHINE FINISH	± 1°
SALES		ANGLES	.005 TIR
		CONCENTRICITY	.001 PER IN.
		SQUARENESS	
DO NOT SCALE DRAWING		REMOVE ALL BURRS BREAK SHARP CORNERS	
MATERIAL SPEC.		TITLE	
		RIGHT ANGLE GEAR MOTOR	
		RECEIVED AS	
		DWG. BY	
		DATE	
		CKD. BY	
		DATE	
		SCALE	
		1:3	



PART NO.

DR250

DUMORE CORPORATION

1030 VETERANS ST. MAUSTON, WI 53948

This Drawing is the property of the Dumore Corporation. It must not be reproduced or copied without written permission.