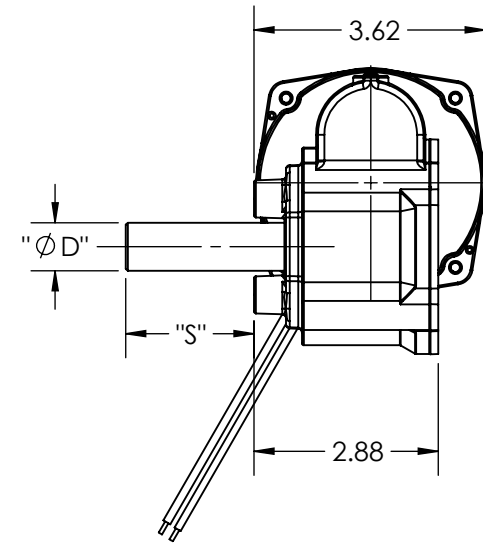
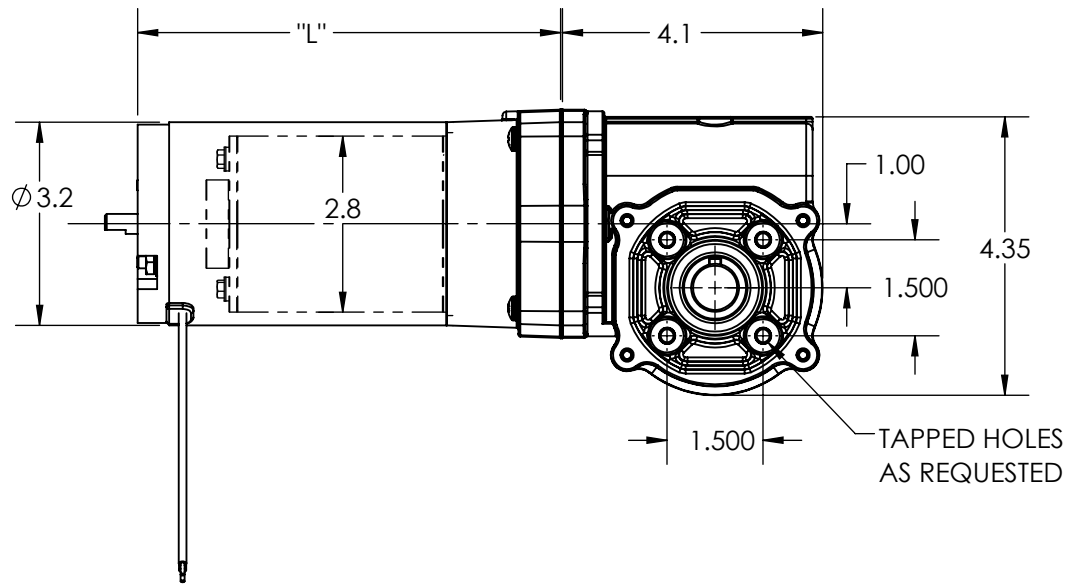
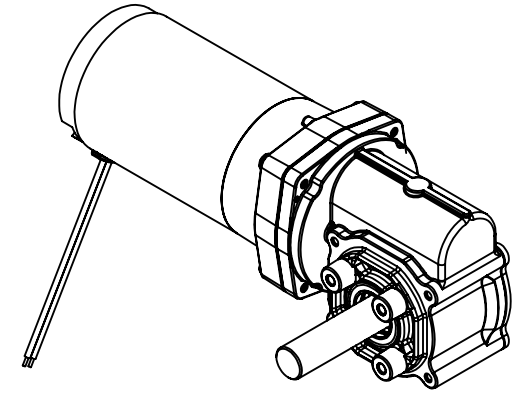


SPECIFICATIONS	
INPUT VOLTAGE	12VDC / 240 VDC
OUTPUT SPEED	1-250 RPM
OUTPUT TORQUE	UP TO 1200 IN-LBS. CONTINUOUS
GEAR RATIO	35:1 - 2900:1
LENGTH "L"	3.75 / 8.00
SHAFT DIA. "Ø D"	UP TO Ø 1.00
SHAFT EXT. "S"	AS REQUESTED
SHAFT FEATURE	HOB, FLAT, KEYWAY, OR AS REQUESTED
MOUNTING	FACE, FOOT MOUNT
BRUSHES	INTERNAL, OR EXTERNAL REPLACABLE
LEAD WIRES	AS REQUESTED
BEARINGS	BALL BEARING
VENTING	ENCLOSED / VENTED / FAN COOLED
INSULATION	UL CLASS H
MOTOR TYPE	SERIES DM32, OR DM28



REV.	DESCRIPTION	DATE	ECN
------	-------------	------	-----

DESIGN APPROVAL	DATE
DES. ENG.	
MFG. ENG.	
Q.C.	
SALES	

UNSPECIFIED TOLERANCES	
.XXX	± .005
.XX	± .015
.X	± .050
MACHINE FINISH	± 1°
ANGLES	.005 TIR
CONCENTRICITY	.001 PER IN.
SQUARENESS	

This Drawing is the property of the Dumore Corporation. It must not be reproduced or copied without written permission.



PART NO.

DR600

DUMORE CORPORATION

1030 VETERANS ST. MAUSTON, WI 53948

DO NOT SCALE DRAWING

REMOVE ALL BURRS
BREAK SHARP CORNERS

TITLE

RIGHT ANGLE GEAR MOTOR

MATERIAL SPEC.	Req. per Piece	Pattern No.

RECEIVED AS

DWG. BY

DATE

SCALE

CKD. BY

DATE

1:2